



FRM220-1000TS

1000Base-T to 1000Base-X SFP Media Converter

The FRM220-1000TS is a transparent Gigabit Ethernet 1000Base-T to 1000Base-SX/LX SFP converter with very low latency. They are managed (when installed in FRM220 with NMC) or non-managed stand-alone media converters, which give you the options to choose from a wide range of industry standard SFP modules with LC connectors. SFPs in multi-mode and single mode types are available as well as BiDi which allows bi-directional transmissions using only a single fiber cable. Because they are completely transparent to Ethernet packets, they are able to support any size frames, including undersized or jumbo packets (9K bytes). LED indicators signal the power status of the converter, UTP port speed, Link, and duplex status, FX port Link and duplex status.

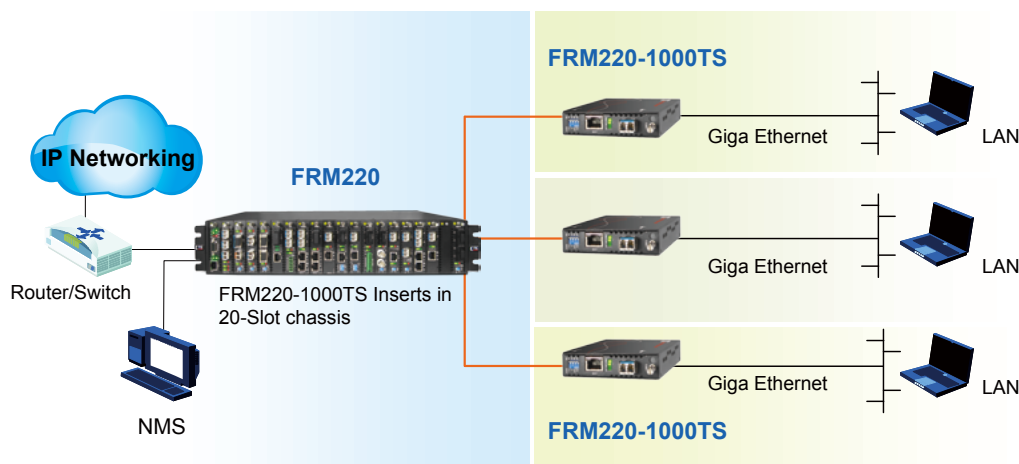
Features

- 1000Base-T to 1000Base-SX/LX
- Network management via terminal or SNMP in FRM220 chassis
- Auto-negotiation or force mode
- Auto MDI/MDIX
- Forward > 9K bytes packets
- Supports Link Fault Pass Through (LFP) function
- Auto Laser Shutdown (ALS)
- Protocol Transparent

Specifications

Optical Interface	Connector	SFP LC	Standard	IEEE 802.3ab										
	Data rate	1000Mbps		Indications	LED (Power, FX-Link, FX Duplex, TX-SPD, TX-Duplex, TX-Link)									
	Duplex mode	Full duplex			Power Input	Card : 12VDC								
	Fiber	MM 50/125µm, 62.5/125µm SM 9/125µm				Standalone : AC, DC options								
	Distance	MM 550m, 2km, SM15/30/50/80/120km WDM 20/40/60km				Power Consumption	< 12W							
	Wavelength	MM 1310nm, SM 1310,1550nm WDM 1310Tx/1550Rx (type A) 1550Tx/1310Rx (type B)					Dimensions	155 x 88 x 23mm (D x W x H)						
Electrical Interface	Connector	RJ45	Weight					120g						
	Data rate	1000Mbps		Temperature				0 ~ 50°C (Operating), -10 ~ 70°C (Storage)						
	Duplex mode	Full duplex			Humidity			10 ~ 90% non-condensing						
	Cable	10Base-T Cat.3, 4, 5, UTP						Certification	CE, FCC, LVD, RoHS					
Standard	Indications	Power Input				Power Consumption			Dimensions	Weight	Temperature	Humidity	Certification	MTBF

Application



Ordering Information

Model Name	Description
FRM220-1000TS	1000Base-T to 1000Base-X SFP media converter (Optional SFP)