

# SDVO-LVDS

SDVO-LVDS is a daughterboard that can be installed onto the SDVO connector of the motherboard. It comes equipped with a LVDS LCD interface for connecting an external digital display device.

## Specifications

### Features

- Single/Dual LVDS transmitter up to 165Mpixels/s
- LVDS low jitter PLL accepts spread spectrum input
- Supports 18/24-bit 1600x1200 LVDS panel
- Supports dimming control via hot-keys
- 2D dither engine
- Panel protection and power sequencing
- High-speed SDVO I serial (1G~2Gbps) AC-coupled differential RGB inputs
- Low voltage interface supports graphics device

- Programmable power management
- Fully programmable through OpCodes I
- Supports complete Windows driver
- Supports boundary scan

### Chipset

- Chronitel CH7308B LVDS transmitter chip

### Temperature

- 0°C to 60°C

### Humidity

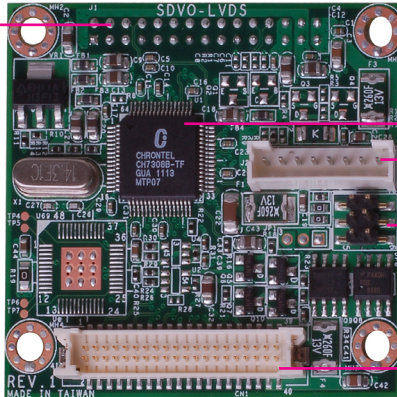
- 10% to 90%

### Dimensions

- 4.5cm x 3.8cm (1.77"x1.49")

SDVO Connector

The SDVO connector is located on the solder side of the daughterboard. Connect this to the SDVO connector that is on the motherboard.

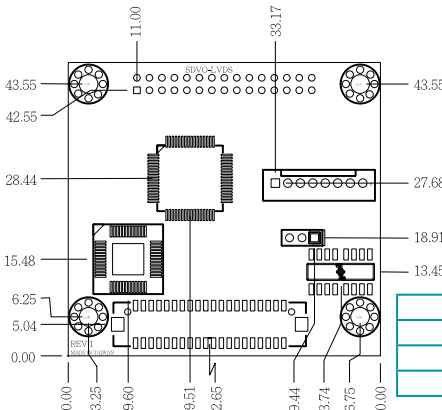


CHRONTEL CH7308B

LCD/ Inverter power

Panel Power Select (JP8)

LVDS LCD Panel



### LCD/Inverter Power Connector

Pins	Function
1	GND
2	GND
3	Panel Inverter Brightness Voltage Control
4	Panel Power
5	+3.3V
6	Panel Backlight On/Off Control
7	+12V
8	+12V

Panel Power Select	JP8
+12V	1-2 On
+5V	3-4 On
+3.3V (default)	5-6 On