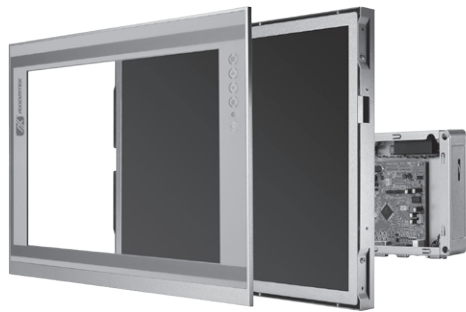


# P6151PR-24VDC-U-E

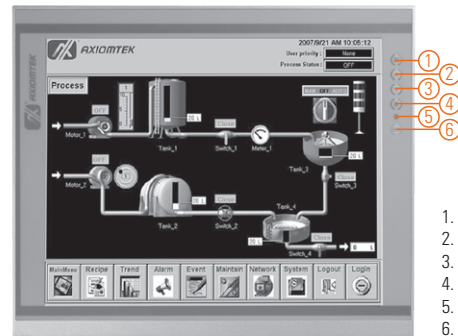
15" XGA TFT Industrial LCD Monitor with Digital IO

## Features

- 15" XGA TFT LED backlight LCD
- Resistive touchscreen with 420 nit high brightness
- Full range 12V/24V DC-in
- HDMI, DVI-D and VGA with multi-signal inputs
- Built-in speakers



▲ Modularized design



1. Menu
2. SEL+
3. SEL-
4. Exit
5. Power LED
6. Power switch

## Introduction

The P6151 is an ultra slim industrial LCD monitor, which adopts 15-inch 420 nits XGA LED backlight LCD display and supports multi-signal interfaces including DVI, VGA and HDMI. Featuring, screw-type adaptor plug design, and 12/24V DC-in means it is fit for all kinds of industrial environments. With the compact mechanism design, users can enjoy free from space constraint. It is especially suitable for POI/POS, excellent HMI and all kinds of heavy-duty industrial fields.

## Specifications

Front Bezel	NEMA 4/12 (IP65)-compliant, metal front bezel
Mounting	Panel mount, wall mount, rack mount or VESA arm FPMPMI mounting (video electronics standards association Flat Panel monitor physical mounting interface)
LCD Panel	Display 15" XGA TFT LCD Max. Resolution 1024 x 768 Max. Colors 16.2 M Active Area (mm) 304.128 x 228.096 Pixel Pitch (mm) 0.297 x 0.297 Response Time 16ms Backlight LED backlight Backlight MTBF 30,000 hrs Viewing Angle (H/V) 160°/160° Contrast Ratio 800 (TYP.) Brightness (cd/m <sup>2</sup> ) 420 nits
Display Control	OSD (on screen display)
Display Mode	VGA 640 x 350 (70Hz), VGA 640 x 480 (60/72/75Hz), VGA 720 x 400 (70Hz), SVGA 800 x 600 (60/72/75Hz), XGA 1024 x 768 (60/72/75Hz)
Input Signal	DVI-D VGA HDMI Touchscreen: Serial RS-232 or USB interface

