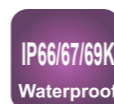


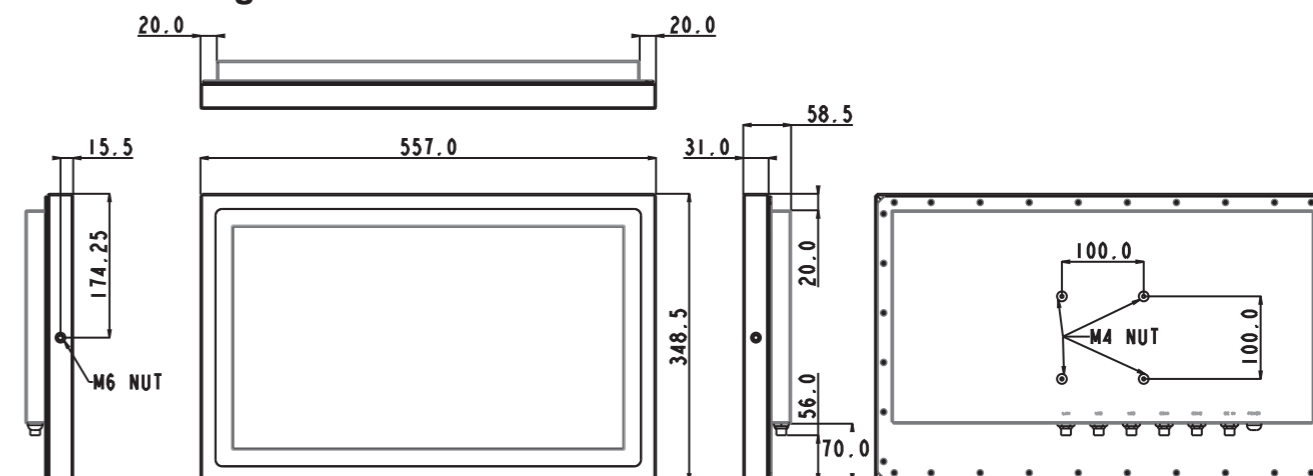


Key Features

- 21.5" Intel skylake Fanless Stainless Panel PC
- IP66 full sealed with Anti-corrosion enclosure
- 21.5" LCD with full flat Resistive touch
- IP67 M12 metal connectors
- Special inspection of 100% waterproof guarantee
- CE, FCC, VCCI Class B certified
- Support Intel Vpro technology by CPU
- Optional Mini-PCIe WLAN with external antenna
- Customized PCAP touch with IP69K true tested
- Customized IP67 solution
- Screen touch lock function



Outline Drawing



Main System

| | |
|----------------|---------------------------------------------------------------------------|
| CPU | FCBGA1356 6th generation Intel® Core i7/i5/i3 processor (15W max.) |
| Chipset | SoC |
| VGA | Intel® integrated HD Graphics 520 by CPU |
| Memory | Two 2133 MHz DDR4 SODIMM socket support dual Channel, non-ECC, up to 32GB |

LCD Panel

| | |
|----------------------|---------------------------------|
| Size | 21.5" 16:9 |
| Resolution | 1920 x 1080 (Full HD) |
| Color numbers | 16.7M colors (RGB 6bit + HIFRC) |
| Viewing angle | 85 (H) / 80 (V) |
| Contrast | 1000:1 |
| Brightness | 250 nits |

Touch Panel

| | |
|---------------------------|-----------------------------------|
| Type | Full Flat Resistive touch, 5-wire |
| Light transmission | 80±5% |
| Hardness | 4H |
| Life time | 490,000 hours |

Storage & Expansion

| | |
|-----------------------|-----------------------------|
| HDD | 2.5" SATA HDD drive bay x 1 |
| Expansion slot | Mini PCIe x 2 |

I/O & Power & Control Keys

| | |
|--------------------------|----------------------------------------------------------------|
| USB | 1 x M12 8pin for USB 1/2 1 x M12 8pin for USB 3/4 |
| COM | 1 x M12 8pin for COM 1/RS-232 1 x M12 8pin for COM 2/RS-232 |
| LAN | 1 x M12 8pin for LAN 1 |
| Power input | 1 x M12 5pin DC power connector, DC7V~32V |
| Power adaptor | AC 90 ~ 264V / 47 ~ 63 Hz / DC output 24V, IP67 |
| Power consumption | 70.4 W (MAX. Loading without adapter) |
| Control keys | Rear bottom: Power on/off |

Mechanical & Environmental

| | |
|---------------------|-----------------------------------------------------------------|
| Housing | Stainless steel (SUS304), chassis type |
| IP rating | IP66 whole set (include the I/O connectors & control keys) |
| Cooling | Fanless |
| Dimension | 557 x 348.5 x 58.5 mm (W x H x D, not include I/O connectors) |
| Weight (net) | 12KG (net) |
| Temperature | Operating - 0°C~40°C (air flow cooling) Storage - -20°C~60°C |
| Humidity | Operating & storage - 10%~90%, non-condensing |
| Regulatory | FCC, CE (EMC), VCCI Class B |

Options

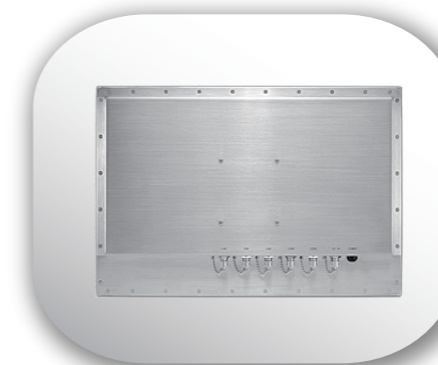
| |
|-----------------------------------------------------------------|
| Wireless or Wireless + BT kit (2 dipole ant) |
| M12 to 1x COM cable (cable length is 2 meters) |
| M12 to 1x USB cable (1 USB Port) (cable length is 2 meters) |
| M12 to 2x USB cable (2 USB Port) (cable length is 2 meters) |
| M12 to 1x LAN cable (cable length is 2 meters) |
| SSD |
| Wall mount / table mount bracket |
| Wireless or Wireless and BT kit (easy clean and Robust Antenna) |

Customization

| |
|-----------------------------------------|
| 1000 nits high brightness LCD |
| Full flat PCT touch screen IP69K |
| Sunlight readable optical bonding |
| LCD Auto dimming |
| LCD Super dimming (Low brightness) |
| USB 3.0 |
| IP67 |
| 5W/2W Speaker |
| Second HD |
| 2 External LAN (USB x2, LAN x2, COM x1) |
| TPM |
| Barcode reader |
| SUS316 enclosure |
| Intel Core i7-6500U |
| COM+power 5V or 12V |



- 1 Giga LAN
- 2 USB 1/2
- 3 USB 3/4
- 4 COM x 2
- 5 DC-in
- 6 Power on/off



Wireless or Wireless + BT (Easy clean and Robust Antenna)

Ordering Information

| | | |
|------------------|-------------|------------------------------------------------------------|
| WTP-9E66-22 (i5) | 15" FANLESS | Core i5-6200U / DDR4 4G RAM / 500G HDD / Full flat R-Touch |
| WTP-9E66-22 (i7) | 15" FANLESS | Core i7-6500U / DDR4 4G RAM / 500G HDD / Full flat R-Touch |