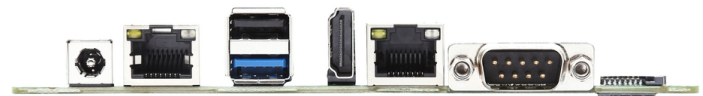
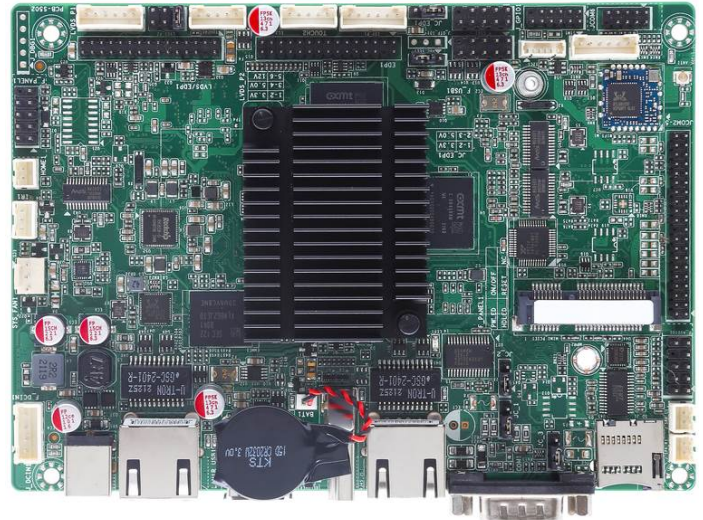
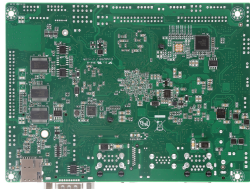


Features

- With Rockchip RK3399 processor
- On board memory 2/4 GB, Storage 16/32/64G eMMC
- 1 x HDMI, 1 x LVDS/eDP, 1 x eDP, support dual displays
- 7 x USB, 6 x COM, 2 x Gigabit Ethernet
- Support WIFI + BT, 1 x Mini-PCIe support 3G/4G
- DC 12V Power Input



Core System

CPU	ARM Rockchip RK3399, Dual-Core Cortex-A72 + Quad-Core Cortex-A53, up to 1.8 GHz and 1.4 GHz
System Memory	Dual Channel DDR4-1866, 2/4 GB, on board
Storage	1 x eMMC 16/32/64G 1 x TF Card slot
Expansion Slot	1 x Mini-PCIe (3G/4G, with 1 x Full size SIM card slot)
Power Input	DC 12V
Dimensions	146 x 105 mm, 3.5 inch
Operating Temperature	0°C to +60°C (+32°F to +140°F)
Storage Temperature	-20°C to +70°C (-4°F to +158°F)
Humidity	10% to 95% relative humidity, non-condensing

I/O Interface

Ethernet	2 x Realtek 1Gbps Ethernet Controller (PHY), RJ45 1 x Wifi+BT (Wifi IEEE 802.11 b/g/n, 2.4GHz, BT4.0)
Serial	6 x RS-232 (COM1 RS-485 optional)
USB	1 x USB 3.0, 6 x USB 2.0
Audio	Everest Codec with (Line-out + MIC) and Amplifier
GPIO	8 x Programmable GPIO
Others	2 x Touch Panel Header (USB only) 1 x Infrared Header

Display

Display	1 x HDMI: Max resolutions up to 4096 x 2160 @ 60Hz 1 x eDP: Max resolutions up to 4096 x 2160 @ 30Hz 1 x LVDS/eDP: Dual 24 bit, up to 1920 x 1080 @ 60Hz eDP up to 4096 x 2160 @ 30Hz
Multiple	Dual displays

Others

OS Support	Android 5.1 / 7.1 / 8.1 / 9.0 Linux
------------	--