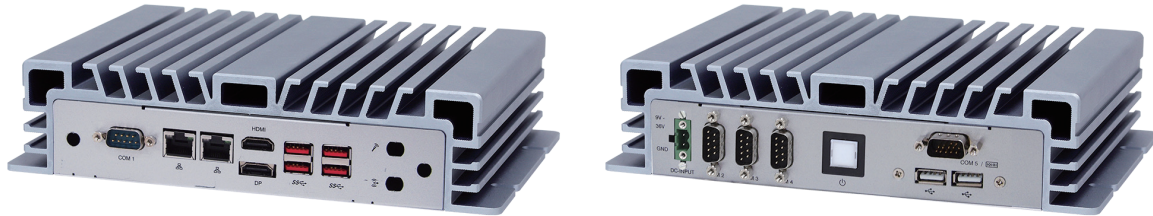


BPC-3080

Arestech

Fanless Compact Embedded Box PC with 8th Generation
Wisylake-U 6 Cores Intel® Core™ i5 Processor & Multiple I/O



Features

- 8th Generation Intel® Core™ i5 Processor up to 3.9
- Dual DDR4 2400 MHz SO-DIMM up to 32 GB
- M.2 and 2.5" SATA HDD or SSD (Option)
- -20 ~ 60° C Operating Temperature

Applications

- Embedded Digital Signage Control Systems
- Factory Automation Applications
- Image Processing
(e.g. Medical 2D and 3D imaging)
- Gaming and Entertainment Industries
- Network Communications

→ Packing List

Description
1 x BPC-3080
1 x Power Cord
1 X Power adapter
2 x Mounting Bracket

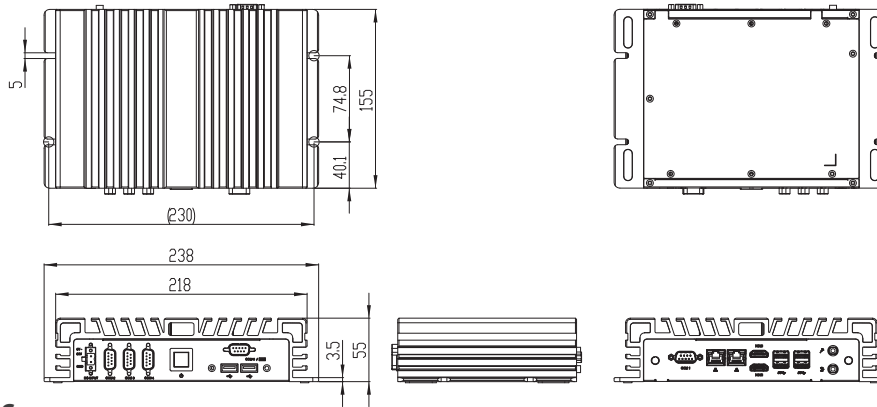
→ Optional Items

Part No.	Description
AWD-3G002	3G (HSPA+) Module + 1 Antenna, Full-size mini PCIe
AWD-4G001	4G (LTE) Module + 2 Antennas, Full-size mini PCIe
AWD-WF001	Wi-Fi 802.11 bgn (1T1R) +1 Antenna (Single band), Half-size mini PCIe
AWD-WF003	Wi-Fi 802.11 abgn/ac/BT4.0 (2T2R) Module +2 Antennas (Dual band), Half-size mini PCIe
AWD-WF004	Wi-Fi 802.11 b/g/n + BT4.0(1T1R) +2 Antenna(Single band), M.2 2230 Type
AWD-WF005	Wi-Fi 802.11 a/b/g/n/ac/BT4.0 (2T2R) +2 Antenna(Dual band), M.2 2230 type

→ Ordering Information

Part No.	Description
BPC-3080-1A1	Intel® 8th Gen Core™ i5-8265U, 2 DDR4 memory, 4 USB3.1 Gen 2, 2 USB2.0, 2 HDMI, 3RS232, 1 RS-232/422/485, 8bits GPIO, 2 GbE, Line out, Mic In, 12-24 V DC input, Phoenix Connector

→ Dimensions



→ Specifications

Model		BPC-3080-1A1
Processor System	CPU	Intel® 8th Gen Core™ i5-8265U
	System Chipset	N/A
	BIOS	AMI 128 Mbit SPI Flash
Memory	Technology	Dual channel DDR4 SO-DIMM sockets
	Max. Capacity	32 GB
	Socket	2 DDR4 260-pin SO-DIMM
Display	Graphics Engine	Intel® UHD Graphics 620
	VGA	N/A
	DVI-D	N/A
	HDMI	2, HDMI1.4 port, Up to 4096x2304@24Hz
	Display Port	LCD panel + HDMI
Front I/O Interface	Multi Display	Yes
	USB	2 USB 2.0
	Serial	4, COM (3 RS232, 1 RS-232/422/485)
	GPIO	8 bits GPIO
	Ethernet	N/A
	Audio	Lin out, Mic in
Rear I/O Interface	Others	N/A
	USB	4 USB 3.1 Gen 2
	Serial	N/A
	GPIO	N/A
	Ethernet	Dual GbE, 10/100/1000 Mbps (LAN 1: Intel® i219V, LAN 2: Intel i211AT)
	Audio	2 (Mic-in, Line-out)
Expansion	Others	N/A
	miniPCIe/ M.2 Slot	1 x Mini-PCIe, 1 M.2 2230 E-Key ((WiFi/BT))
	PCI/ PCIe Slot	N/A
Storage	HDD/SSD	1 HDD/SSD SATA 3.0 (600 MB/sec)
	RAID	N/A
	mSATA/M.2	1 M.2 2280 M-Key, (SATA)
Power	Power On Model	AT/ATX
	Power Supply Voltage	12-24 V DC input
	Power Consumption (Typical)	1.20A @ 12V (14.4W)
	Power Consumption (Max.)	5.08 @ 12V (61W)
	Battery	CR2032; 3.3V
Mounting	Power Connector Type	AT / ATX
	Type	Desk mounting
Environment	Operating Temperature	-20~60° C (-4~140° F) w/ Extend Temp. RAM & Extend Temp. 2.5" SSD(Humidity: 60° C @ 80% RH Non-condensing)
	Storage Temperature	-40~85° C (-40~185° F)
	Humidity	5~95% @ 40° C, non-condensing
	Vibration	1 Grms, IEC 60068-2-64, random, 5~500 Hz, 1 Oct/min., 1hr/axis, x, y, z 3 axes
	Shock	20 G, IEC 60068-2-27, half sine, 11 ms duration
General	Certification	N/A
	Thermal Dissipation	Fan based System
	Ingress Protection	IP20 Protection
	Dimensions (W x H x D)	238 x 55 x 155 mm (9.37" x 2.16" x 6.1")
	Net Weight	1.97 kg (4.34 lb)
	Operating System	Windows 10 IoT, Linux, Windows 10 Professional