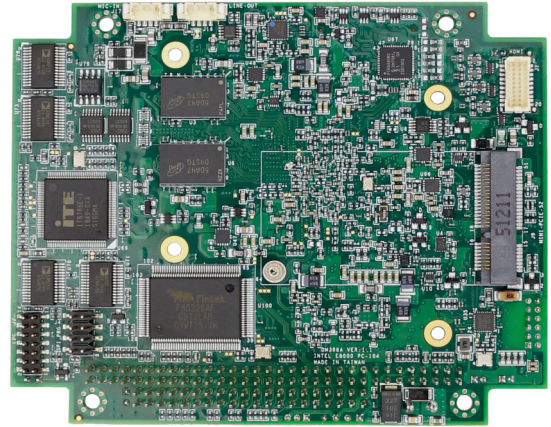
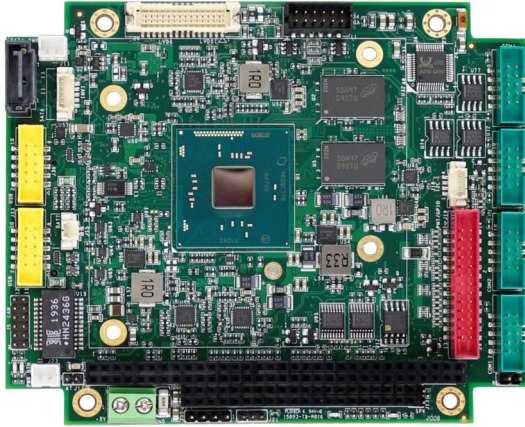


IBW-6954



Specifications

CPU	Intel® Atom™ x5-E8000 2.00GHz(Burst) 1.04GHz Quad Core Intel® Pentium® N3710 2.56GHz(Burst) 1.6GHz Quad Core Intel® Celeron® N3160 2.24GHz(Burst) 1.6GHz Quad Core		
RAM	4GB DDR3L 1600		
BIOS	UEFI BIOS		
Bus	ISA Bus x1	MiniPCIe(full-size) x1	
Display	Hardware decoding: H.265, MPEG2, MVC, VC-1, VP8, WMV9, and JPEG/MJPEG formats Hardware encoding: H.264, MVC, and JPEG/MJPEG formats VGA: resolution up to 1920 x 1200 @ 60Hz HDMI: resolution up to 2560 x 1600 @ 60Hz, 24bpp LVDS: resolution up to 1920 x 1200 @ 60Hz, in dual LVDS bus mode		
LAN	RTL8111H GbE		
HD Audio	Realtek ALC262 VD		
Disk Support	SATA device	mSATA device (Option)	
I/O Interface	COM x4 (2 for RS232/422/485) I ² C x1	USB 2.0 x4 Audio (Line-out/MIC-in)	Parallel/16-bit GPIO x1 (Option)
Connectors	5.4mm 7-pin Standard SATA connector x1 2.0mm 10-pin box header for COM x4 2.0mm 2-pin header for Reset x1 2.0mm 14-pin header for LPC x1 1.25mm 4-pin header for I ² C x1 HDMI connector x1 Mini PCIe slot x1	2.0mm 12-pin header for VGA port x1 2.0mm 12-pin header for LAN port x1 2.0mm 2-pin box header for SATA Power x1 2.00mm 10-pin box header for USB x4 1.25mm 2-pin header for COMS battery x1 2-pin header for Speaker Terminal block for Power input x1	2.0mm 26-pin box header for Printer x1 2.0mm 2-pin header for Power button x1 2.0mm 2-pin box header for AT/ATX mode x1 1.25mm 4-pin wafer for MIC-in/Line-out x2 1.25mm 30-pin wafer for LVDS x1 Standard PC/104 connector x1
Power Requirement	5VDC		
Operating Temperature	0°C to +60°C (with airflow)		
Dimension	116mm x 96mm		
Weight	81g		
O/S Support	Windows 10	Windows 7 (64bits)	Linux

Ordering Information

PART NO.	CPU Speed	DRAM (DDR3L)	Disk Support	Display	GigaLAN	COM	USB 2.0	I ² C	Parallel	Audio
IBW-6954-E4	(Intel® Atom™ x5-E8000) 1.04GHz		mSATA	VGA						
IBW-6954-A4	(Intel® Pentium® N3710) 1.60GHz	4GB	SATA device	LVDS	1	4	4	1	1	MIC-in
IBW-6954-B4	(Intel® Celeron® N3160) 1.60GHz		Micro SD	HDMI						Line-out
CABLE-SET 6954	Cable set for IBW-6954 (RS232 x4, USB x2, PRINT, Audio x2, LAN, VGA)									