

IS-DG305P Series

5 Giga ports unmanaged Layer 2 Industrial PoE Switch



ISON IS-DG305P series are full Gigabit unmanaged Ethernet Switches that providing 5 Gigabit ports, w/ 4 PoE ports IEEE 802.3af/at PoE ports,. It' s fulfill easy touse, plug&play applications. A full Gigabit network provides higher throughput than legacy Fast Ethernet network. With easy to use, cost effective unmanaged switch, user can easily use in factory production line or embedded into machine system. Also, IS-DG305P series unmanaged switches supports some useful function by default, such as QoS, storm protection. That can help for the network traffic optimization.



Key Features

- > 5 / 4 Giga Copper ports with 0 / 1 100/1000 SFP ports
- > Support up to 4 port IEEE 802.3af/at ports (15.4/30Watt)
- > Support 9K Jumbo frames
- > IEEE 802.3x flow control & back-pressure
- > Layer 2 wire-speed switching engine
- > Support IEEE 802.1p TOS/Diffserv, QoS
- > Multicast / Broadcast / Flooding Storm Control
- > Fan-Less design with wide-temperature range (-40~75°C)
- > Redundant power input (46~57 VDC) & Reserve power protection
- > Support Din-Rail or wall mount installation
- > Support Relay Output Alarm
- > IP 30 Protection
- > 1.5KV Hipot
- > 2KV surge immunity on RJ45 ports

Specifications

Ethernet

Operating Mode	Store and Forward, L2 wire-speed/non-blocking switching engine
MAC addresses	8K
Jumbo frames	9K Bytes
Packet Buffer	1 Mbits

Copper RJ45 Ports

Speed	10/100/1000 Mbps Support straight or cross wired cables
MDI/MDIX Auto-crossover	10/100/1000 Mbps speed auto-negotiation; Full & Half Duplex
Ethernet isolation	1500 VRMS 1minute (Hipot), 2 KV surge immunity on RJ45 Copper ports.

SFP (pluggable) Ports

Port Types supported	100/1000 Base SFP Slot
Filter port connector	LC/RJ45 connector for fiber ports
Optimal fiber cable	Typical 50 or 62.5/125 μ m for multimode (mm) Typical 8 or 9/125 μ m for single mode (sm)

Features

QoS	IEEE 802.1p, TOS/Diffserv
Number of Queue	4
Storm Protection	Multicast/Broadcast/Flooding Storm Control
Traffic Shaper	Port-Based Port Sharping
PoE Function	IEEE 802.3af/at (15.4/30 Watt)

Power

Power Input	Redundant Power Input, Terminal Block
Input Voltage Range	46~57 VDC
Reserve power protection	YES
Power Consumption	IS-DG305P-4 3.6 Watt, IS-DG305P-F-4 4.3 Watt (Without PD load)

Indicators

Power status indication	Power Input status
Ethernet port indication	Line & speed

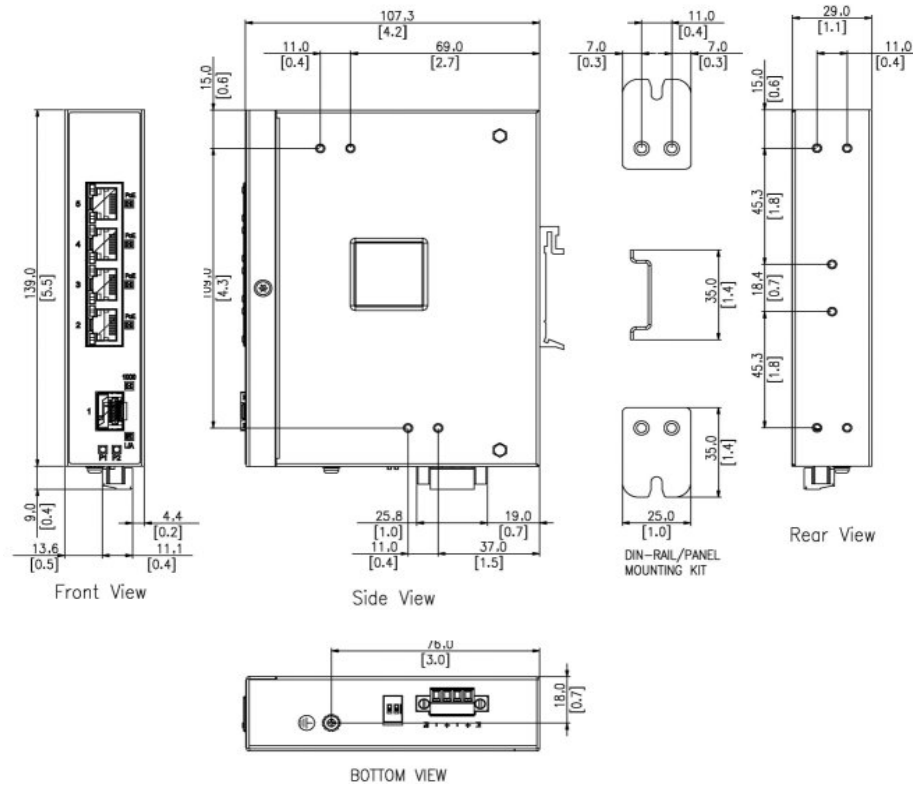
Environmental and Compliances

Operating Temperature	-40~75°C (Cold startup at -40°C)
Storage Temperature	-40~85°C
Humidity	5~95% (Non-Condensing)
Vibration, shock, free fall	IEC-60068-6, -27, -32
Certification Compliance	CE, FCC
Electrical safety	CE
EMC	FCC Part 15, CISPR 22 (EN55022) Class A IEC-61000-4-2, -3, -4, -5, -6 (Level 3)
RoHS & WEEE	RoHS (Pb free) and WEEE Compliant
MTBF	>25 years

Mechanical

Protection	IP30
Dimension	112.2mm (H) x 29.1mm (W) x 89.4mm (D) (without DIN rail clip)
Weight	295g
Installation	DIN-Rail mounting; Wall mounting
Relay Output Alarm	1A, 24VDC, Normal Open

Dimension Diagram



Ordering information

Available Models	Description	Gigabit Ethernet Port	
		10/100/1000BaseT(X)	100/1000BaseSFP
IS-DG305P-F-4	Industrial 5 port Gigabit Layer 2 unmanaged PoE Ethernet Switch,	4	1
IS-DG305P-4	Industrial 5 port Gigabit Layer 2 unmanaged PoE Ethernet Switch	5	

Accessories

- SFP Modules