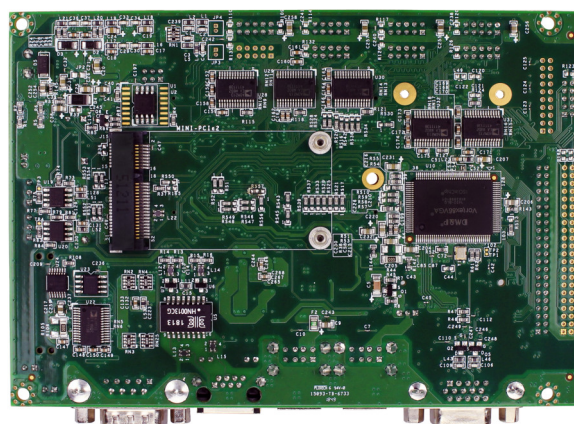
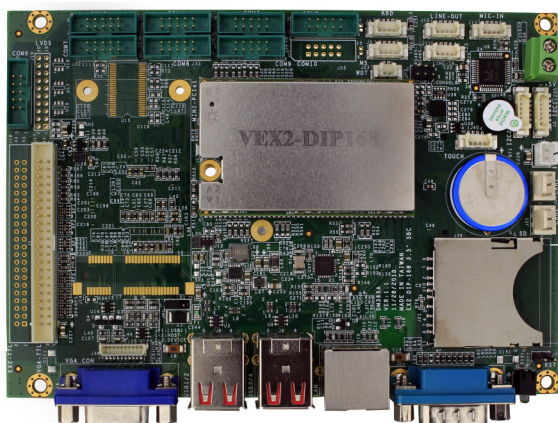


VEX2-6427



Specifications

CPU	DM&P Vortex86EX2 Processor 600MHz		
RAM	1/2GB DDR3 Onboard		
IOS	Coreboot BIOS		
Bus	MiniPCIe x2 (Option)		
Display	Integrated 2D VGA chip with VGA and TFT Flat Panel Interface Support VGA: resolution up to 1024 x 768 @ 60Hz LCD: resolution up to 1024 x 768 @ 60Hz LVDS: resolution up to 1024 x 768 @ 60Hz, single channel 24-bit.		
LAN	Integrated 10/100Mbps Ethernet		
Audio	Realtek ALC262	Buzzer	
Disk Support	SD Card	EMMC (support up to 16GB)	
I/O Interface	COM x8 CAN bus x2	USB x4 Touch function x1(Option)	I ² C x2 PS/2 x 2
Connectors	1.25mm 4-pin wafer for I ² C x2 1.25mm 4-pin wafer for Touch function x1 (Option) 1.25mm 4-pin wafer for Line-in, Line-out, MIC-in x3 2.0mm 44-pin box header for LCD x1 (Option) 15-pin D-sub female connector for VGA x1 SD Card slot x1	1.25mm 4-pin wafer for Keyboard x1 1.25mm 44-pin box header for LCD x1 2.0mm 10-pin box header for COM x7 (Option) 2.54mm 3-pin molex for CAN Bus x2 MiniPCIe slot x2 USB connector x4	1.25mm 4-pin wafer for Mouse x1 2.0mm 44-pin box header for LCD x1 2.0mm 20-pin header for LVDS x1 9-pin D-sub male connector for COM x1 RJ45 connector x1
Power Requirement	TBA		
Operating Temperature	-20°C to +70°C -40°C to +85°C (Optional)		
Dimension	102 x 146mm		
Weight	130g		
O/S Support	Windows Embedded Compact 7 Buildroot DOS	Windows Embedded CE6.0 POS Ready (WePOS)	Windows Embedded 2009 QNX Linux FreeBSD

Ordering Information

PART NO.	CPU Speed	DRAM (DDR3)	Disk Support	Display	LAN	USB (Ver. 2.0)	COM	I ² C	CAN Bus	Audio	MiniPCIe
VEX2-6427-4C4EE	600MHz	1/2GB	SD Card	LCD	1	4	4	2	2	Line-in	2
VEX2-6427-8C4VEE			eMMC	LCD, LVDS VGA						Line-out MIC-in. Buzzer	1

PRELIMINARY VERSION