

# MODAT-200

## Order Entry PDA

- 667 MHz ARM11 CPU with built-in hardware codec (H.264/MPEG4/VC-1) and 2D/3D graphics acceleration
- Built-in Windows Mobile 6.5 OS
- USB 1.1 Host/Client
- Built-in Wi-Fi and Bluetooth wireless communication
- 3.5" TFT resistive touch screen
- MicroSD slot

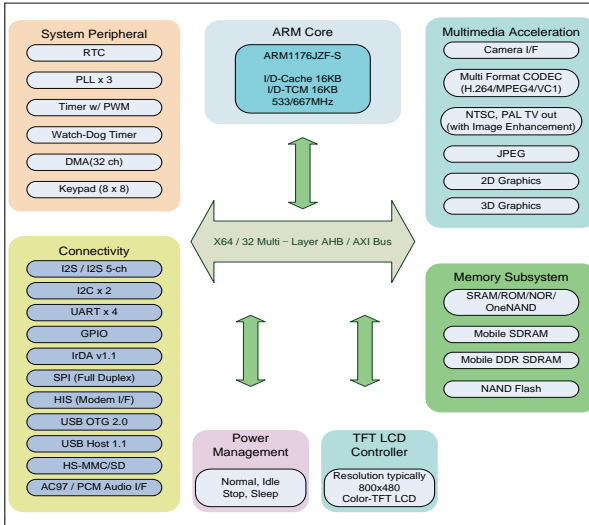


## Application

- Quick Registration
- Inspection
- Table Service
- On-Line Sales



# High Performance, Low Power Consumption CPU



The S3C6410X is a 16/32-bit RISC microprocessor that delivers high performance with a cost-effective, energy-efficient design. Not only does it provide general application for mobile phones, it is also a perfect match with handheld computers with its ARM1176JZF-S based CPU subsystem and Java acceleration engine.

- Multiformat codec provides MPEG-4/H.263/H.264 encoding and decoding
- 2D graphics and 3D graphics acceleration with Bit Blit and rotation.
- USB 2.0 OTG supports high speed (480Mbps, on-chip transceiver).
- USB 1.1 Host supports full speed (12Mbps, on-chip transceiver).

# Built-in Windows® Mobile 6.5 OS

- Windows® Mobile(WM) is a compact mobile operating system developed by Microsoft®, and designed for use in smart phones and mobile devices.
- IEIMobile Enterprise PDA series adops Windows® Mobile 6.5

# Built-in Applications

- Internet Explorer Mobile
- Microsoft® Office Outlook Mobile
- Windows® Media Player Mobile
- Microsoft® Office for Mobile is programmable and compatible with desktop Windows® (optional)
- Microsoft® SQL Server Mobile edition for desktop PC or back-end ERP system (optional)



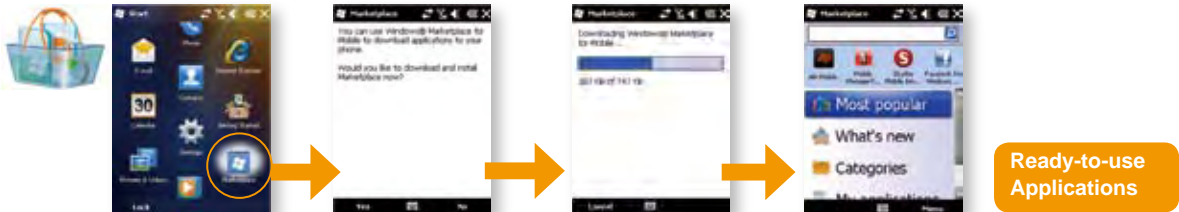
# Windows® Mobile Application Development

- Windows® Mobile Device
  - NET Compact framework
  - Visual basic .NET, Visual C# .NET.
  - BCL (Base Class Libraries)
- Native Code
  - Machine code
  - C++ ; MFC / ATL / WTL / STL

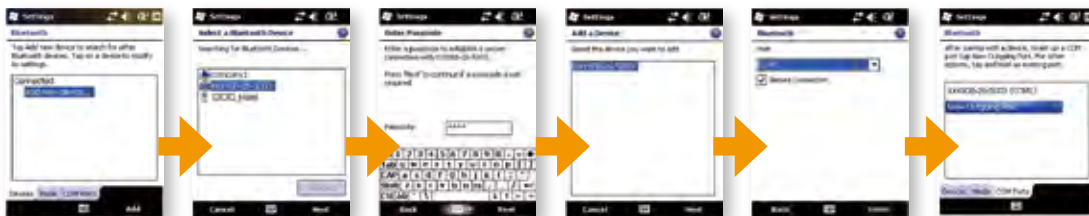


# Windows® Marketplace for Application Support

- Windows® Marketplace for Mobile (<http://www.windowsmarketplace.com>)



- Bluetooth® Setting (Connect with HID such as barcode scanner, printer and headset)



- Setting COM Port
- Make a Pair

**MODAT-200**



Take orders while customers are waiting in a busy shop or cafe

**MODAT-200**



Drive-through quick order services

**MODAT-200**



Check reservations and table status at reception

**MODAT-200**



Allow customers to pay at the table, receive receipt and give feedback all at once.



**MODAT-100**  
POS computer



**Wi-Fi AP**



**ICEROCK**  
POS computer



**Bluetooth®**  
headset

**MODAT-200**  
Ordering entry

**Bluetooth®**  
mobile printer



**Hanger** The hanger is designed for optimal flexibility. Wherever there is a hook and hanger, the MODAT-200 can easily be used in various situations

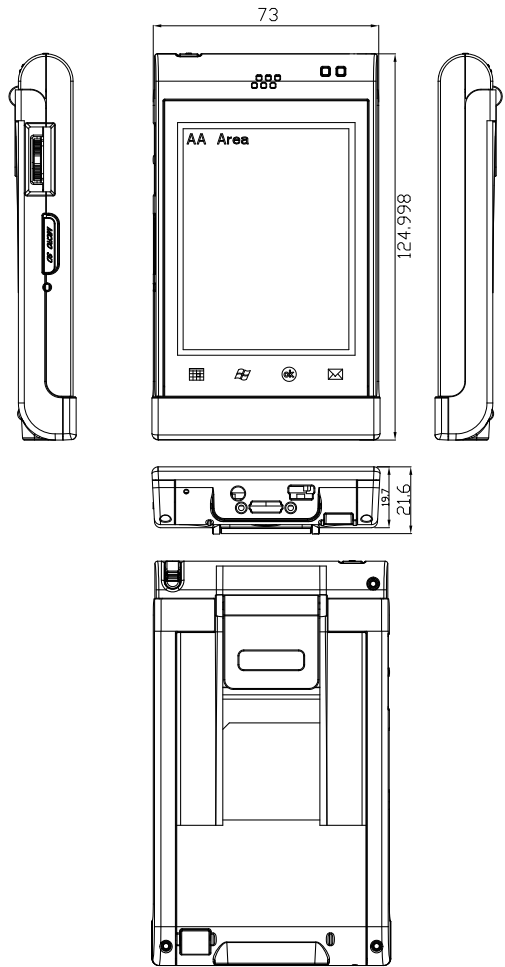


The Neck Strap Clip is located at the bottom panel to make the MODAT-200 be taken up for service at the right side.

## Specifications

Model	MODAT-200	
Display	LCD Size	3.5" TFT LCD
	Brightness( cd/m <sup>2</sup> )	250 cd/m <sup>2</sup>
	Max. Resolution	240 (H) x 320 (V) QVGA
	Viewing Angle	80/80/80/80 Deg.
	Touch Screen	4-Wire Resistive Type Touch
System	CPU	Samsung® 6410 ARM11 667MHz
	Operating System	Microsoft® Windows® Mobile 6.5
	Memory	128MB Flash + 128MB SDRAM
	Storage	MicroSD Slot
Communication	Wi-Fi	Wi-Fi® 802.11b/g
	Bluetooth	Bluetooth® 2.1 + EDR
Indicators & Buttons	LED Indicators	Message/battery/charging status LED Wi-Fi / Bluetooth enable/disable LED
	Hot Keys	1 x Rolling Key
I/O Interface	Audio	1 x Headset Built-in Mic-in
	Expansion	1 x Mini USB Host 1.1/Client
Power	Power Adapter	Input: 100 V AC to 240 V AC ~ 50-60Hz 0.2A Output: 5V/1A
	Battery	3.7V 1880mAh battery (built-in non-swappable)
Environment	Operating Temperature	-10°C ~ 50°C
	Storage Temperature	-20°C ~ 70°C
	Humidity	5%~95% non-condensing
	Drop Survival	1.2M
	Environmental Protection	IP 54
	Certification	CE, FCC,
Physical Characteristics	Dimensions (LxWxH) (mm)	125 x 74 x 18
	Weight	200 g

## MODAT-200 Dimensions (Unit : mm)

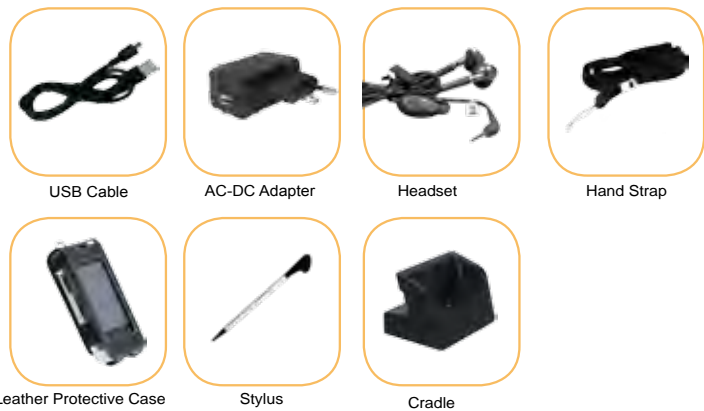


## Ordering Information

Part No.	Description
MODAT-200-WB65-En	3.5" TFT-LCD 250 cd/m <sup>2</sup> QVGA Enterprise PDA with Samsung® 6410 ARM11 667MHz CPU, 802.11 b/g Wireless, Bluetooth, Windows Mobile 6.5 OS, RoHS

## Packing List

Item	Part No.	Qty
Cradle	MODAT-200-CR01-R10	1
Leather Protective Case	7Z000-MODAT200POUCH-RS	1
USB Cable	32001-000301-100-RS	1
AC-DC Adapter	63040-180005-000-RS	1
Headset	7Z000-EMI164001S-RS	1
Stylus	7Z000-MODAT200STYLUS-RS	1
Hand Strap	7Z000-MODAT200STRAP-RS	1
User's Manual CD ROM	7B000-000548-RS	1



## Optional Accessory List

Item	Part No.	Description
Leather Protective Case	7Z000-MODAT200POUCH-RS	Black, Professional leather protective case for MODAT-200
AC-DC Adapter	63040-180005-000-RS	Input: 100 V AC to 240 V AC ~ 50-60Hz0.2A Output: 5 V DC, 1 A (Max)